

## MVBM SERIES BOURDON TUBE MANOMETER



### Product Features

Measuring range	: -1...+1.000 bar (selectable)
Accuracy class	: Class 1,6
Case material	: 1.4301 (304) SS
Wetted part material	: 1.4404 (316L) SS
Process temperature	: -20...80 °C
Protection class	: IP65
Filling liquid	: Glycerine (optional)

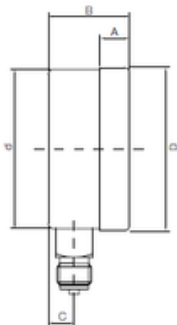
### Application Areas

MVBM type pressure gauge is a measuring device that measures and visually displays the pressure exerted by a gas or liquid in a closed system. It is generally designed for high-precision liquid and gas pressure measurement, especially in aggressive environments, in industries such as chemistry, petrochemicals, mechanical engineering, and water/gas pipelines. Stainless steel Bourdon tube and diaphragm models offer durability under harsh conditions.

### Model Coding

MODEL	CASE SIZE	CONNECTION TYPE	CONNECTION MATERIAL	MEASURING RANGE	FIILLING LIQUID	
MVBM	06 63mm	10 G ¼" male thread	BR Brass	V1 -1...0 Bar	P5 0...25 Bar	VD Without
	10 100mm	11 ½" NPT male thread		V2 -1...5 Bar	P6 0...50 Bar	
	16 160mm	20 G ½" male thread	SS 316L SS	V3 -1...9 Bar	P7 0...100 Bar	GD Glycerine
	25 250mm	21 ½" NPT male thread		V4 -1...15 Bar	P8 0...150 Bar	
		YY special		P1 0...1 Bar	P9 0...250 Bar	
				P2 0...4 Bar	P10 0...400 Bar	
			P3 0...10 Bar	P11 0...600 Bar		
			P4 0...16 Bar	P12 0...1000 Bar		

### Product Dimensions



NG	A	B without contact	B 1 or 2 contacts	B 3 contacts	B 4 contacts	C	d	D	E	H	SW	W	X
63 mm	6	31	-	-	-	13	62	68	55	-	14	-	-
100 mm	17	48	82	97	110	15	100	101	86.5	54	22	0	88
160 mm	21	50	101	120	120	15	159	162	117	56	22	0	118